

Viking 65



 **viking**[®]
yachts

For those who demand the best.

Viking 65 Enclosed Bridge

As you clear the inlet and point the bow toward the horizon where the sky melds into the sea, you look at your watch with a smile. In less than two hours, you will be dipping your lines into the cobalt blue water 75 miles from shore, where wolf packs of bigeye tuna cream dolphin for breakfast. And majestic blue marlin smoke gold reels for fun.

But it is going to be different today because you are aboard a Viking 65 Convertible, quite simply the finest looking, strongest performing sport-

fisherman ever to patrol the thousand-fathom curve where gladiators of the deep feel at home. With twin 1,800 bhp diesels, she has flank speeds approaching 40 knots. In a fishing tournament where short minutes can make all the difference, she has the power to get you to the weigh-in dock with time to spare. And the mettle to make your own weather days, so you can fish longer and more comfortably when the other boats stay tied to the dock.

Matching this unrivaled offshore

prowess are lavish accommodations for entertaining family and friends in absolute luxury.

From her keel up, the 65 Convertible in Open and Enclosed Bridge configurations is the epitome of advanced marine engineering; nearly four decades worth, in fact. Designed, built and outfitted by the best manufacturing team in the industry at our 550,000 square foot facility on the Bass River in New Gretna, New Jersey, the 65 Convertible has no equal. Welcome aboard.



Razor sharp entry slices cleanly through the seas. Inward tapered cabin sides at the after bulkhead reduce spray and exhaust back draft underway.

Salon and Galley



Sumptuous surroundings in the salon are matched by the sophisticated practicality of concealed appliances in the galley and exquisite hand-finished joinery.



Opulence fit for a king and queen

Staterooms are spacious, luxurious, and thoroughly private, with generous stowage throughout. The standard plan is four staterooms and a three-stateroom arrangement also is offered. The master suite is amidships and features a luxurious king-size walkaround bed that lifts easily on gas struts to reveal a huge stowage compartment suitable for golf club bags and other bulky gear. An entertainment center and a remarkably large hanging locker are built into the hand-fitted teak joinery. The head is equipped with a solid surface countertop with a molded sink, a medicine cabinet, a fiberglass stall shower with a seat and a linen closet. A queen-size bed highlights the forward stateroom with a private head and shower. Upper and lower berths provide restful accommodations for guests in the starboard stateroom. The fourth stateroom, opposite the washer and dryer in the companionway, is abaft the master suite. It has a separate head and shower as well as private access from the engine-room, which makes the stateroom ideal crew quarters.

Master Suite



Forward Stateroom



Starboard Stateroom

Master Head





Master Suite with Lounge



Lounge and Office Area



Crew Quarters



Crew Head

In the three-stateroom layout, the master suite also has an athwartships king-size bed. Steps lead to a private study or lounge area with an entertainment system, an adjoining work area and a voluminous cedar-lined hanging closet. In either arrangement, you also can select an optional VIP guest suite forward with a double lower berth and single upper berth.

Viking 65 Convertible

Length, Overall (L.O.A.) 65 ft. 10 in. (20.07 m)

Length, Overall w/pulpit 69 ft. 10 in. (21.29 m)

Beam 18 ft. 9 in. (5.72 m)

Draft 5 ft. 6 in. (1.68 m)

Height above waterline
(to masthead light) 65 EBC 21 ft. 8 in. (6.60 m)

Height above waterline
(to flying bridge hardtop) 65 C 18 ft. 9 in. (5.72 m)

Gross Weight 65 EBC (wet) 102,000 lbs. (46,363 kg)

Gross Weight 65 C (wet) 96,000 lbs. (43,545 kg)

Fuel Capacity 2,000 gals. (7,570 l)

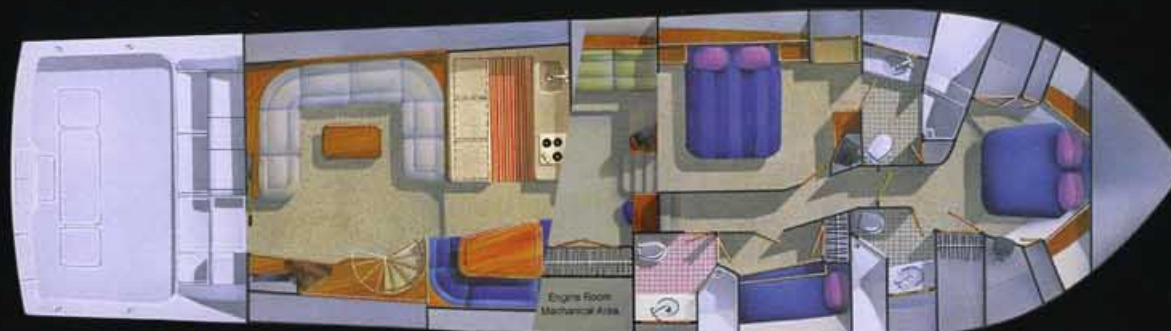
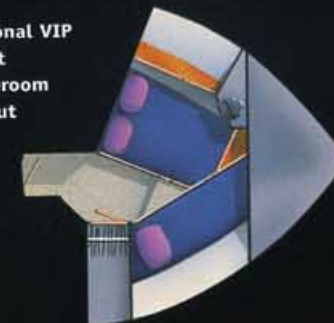
Water Capacity 360 gals. (1,173 l)

Cockpit Size 179 sq. ft.

Transom deadrise 15.5 degrees



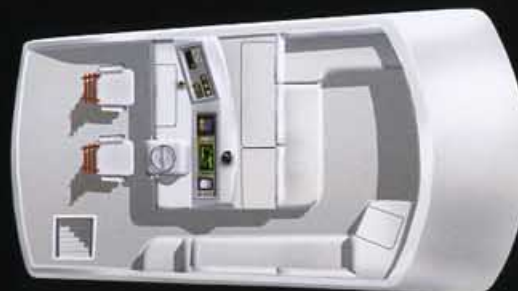
Optional VIP
Guest
Stateroom
Layout



A spiral staircase is available to access the Enclosed Bridge from the salon. More than a helm station, the Enclosed Bridge is a great room with an entertainment center and settee. The VIP suite can be ordered with either the three or four-stateroom plan.



In place of the lounge abaft the master suite, a fourth stateroom with a head and private access from the engine room is available. The Open Bridge is equipped with twin pedestal and wraparound seating, a refrigerator and freezer and ample rod storage.



Crew Quarters
(fourth stateroom with
en suite head)

Viking 65 Enclosed Bridge



The enclosed bridge is a one-piece molded structure, which delivers a seamless appearance, strength and structural integrity.

Think of it as a room with a 30-knot view

More than a helm station, the climate-controlled enclosed bridge not only offers great visibility for operating in any weather with its thin windshield pilasters, but it also doubles as a great room with spectacular views. An after station facilitates docking and fishing maneuvers with precision.



Enclosed Bridge



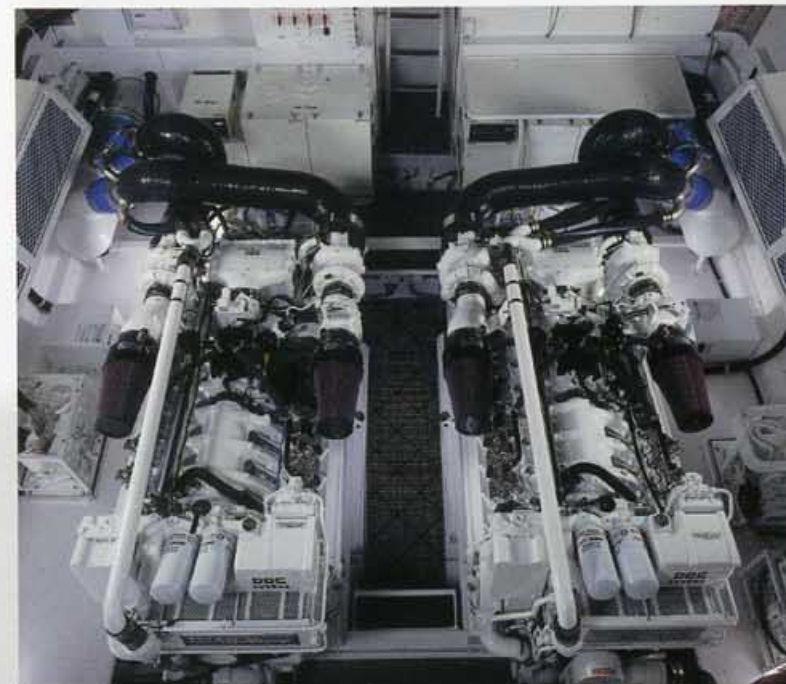
Air conditioning gently flows from behind the valances for whisper jet quiet distribution throughout the salon and the varnished laminated teak railing to the bridge is a work of art. Yet the Viking masters haven't overlooked other necessities like the overhead grabrail, fiddles and rounded corners on the Corian countertops in the galley.

A thesis in marine engineering

On the fishing grounds or at the dock, the 65 Convertible is the epitome of form following function. The 179 square-foot cockpit is the manual for tournament-proven efficiencies. Three refrigerated chill boxes keep drinks cold and perishables fresh. A molded console conceals a bait-prep center, freezer, tackle stowage and engineroom access. The extended flying bridge overhang does a superb job of blocking sun, spray and wind above the console, which is the perfect height for riding shotgun and watching baits. A 3/8-inch aluminum plate is laminated into the sole to anchor the fighting chair.

Gaffs and shore connections are conveniently tucked out of sight in weatherproof enclosures.

The recessed anchor and rode locker on the fore-deck is surrounded by aggressive nonslip. Lessons learned from tens of thousands of tournament hours have contributed to the design of the flying bridge with power-assisted steering to outmaneuver the williest billfish and maximum fore, aft and side visibility to spot a dorsal and tail at a hundred yards. Rod stowage, a freezer, a refrigerator and powder-coated grabrails are in all the right places.



Four-sided accessibility and standing height in the engineroom



Tournament proven
179-square-foot cockpit



Dedicated pump room



Port and starboard
Glendinning Cablemasters



Aggressive nonslip on walking surfaces



Weather protected electronic stowage



Space saving athwartships bridge ladder



Flying bridge refrigeration and freezer



Better than custom-built

Since 1964, the mission of Viking Yachts has been to build the finest production yacht money can buy. Back then, as the new kid on the dock, we trailed and learned from the industry leaders. But today, we are recognized as the innovators. We manufacture over 90 percent of the components that go into our boats. We utilize I-beam steel engine beds and composite construction to increase strength and save weight to maximize performance efficiencies. Viking engine-rooms are the best on the water and the blueprint for our competition. We build our boats with two major parts: the hull and the foredeck, deckhouse and cockpit assembly. These components are mechanically

and chemically bonded to create a veritable one-piece structure that endures punishment from the ocean year after year. This is why Viking Yachts have enviable resale value and are considered preferred insurance risks. Our "get it right" mantra fuels a passion for excellence that we are very proud of. We invite you to see for yourself by arranging a sea trial with your Viking Yachts dealer.

Viking Yachts is a family owned and operated business under the watchful eyes of co-owners Bob and Bill Healey, honored as Ernst & Young's Manufacturing Entrepreneur of the Year in New Jersey.





For those who demand the best.

Route 9, On the Bass River, New Gretna, New Jersey 08224 U.S.A. • Tel (609) 296-6000 • Fax (609) 296-3956 • www.vikingyachts.com

For full details and the name of the Viking dealer nearest you, contact Viking Yacht Company.

The right is reserved to make changes, without notice, at any time, in equipment, materials, prices, and specifications. Accommodation drawings and photos may show some optional equipment.